



Big dreams. Good jobs. All students.

First ... thanks!

**“This [career] day has given me
more hope.”**

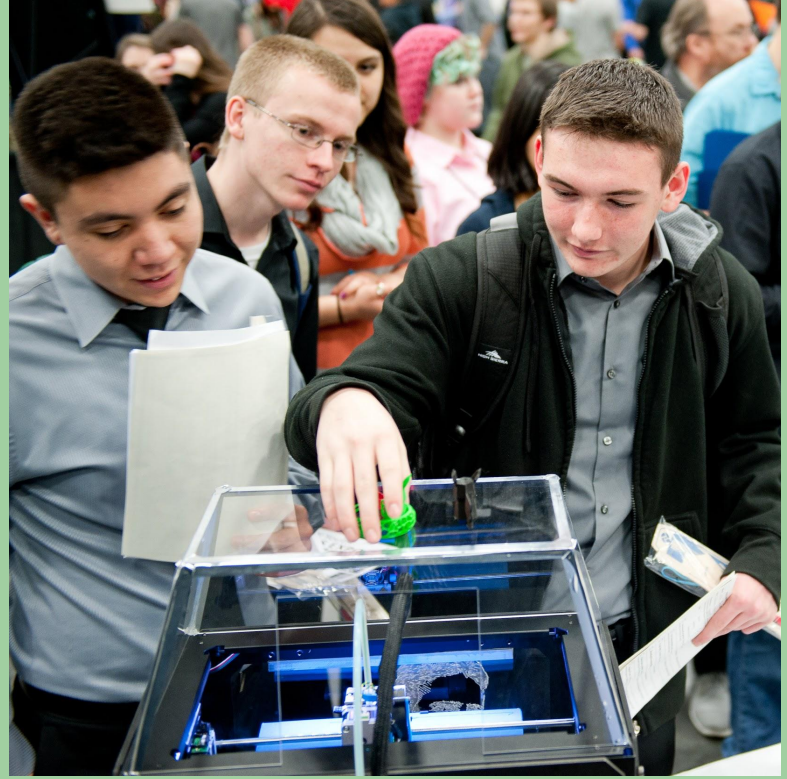
– Brian Parker-Saladier, Madison High School,
after a Nike Career Day, March 2015

What you
already know
about us





5,700+ students
at the Expo



130+ exhibitors:
HEALTH CARE, TECHNOLOGY & MORE





966

mock interviews



What you may not know:



**What you may
not know:**

**We help
your students
year-round**



We are connected to top employers



We are connected to CTE revitalization



PSU: pathways to engineering



OHSU: pathways to health care

Our connections add up.



3 staff.

Our connections add up.



3 staff.

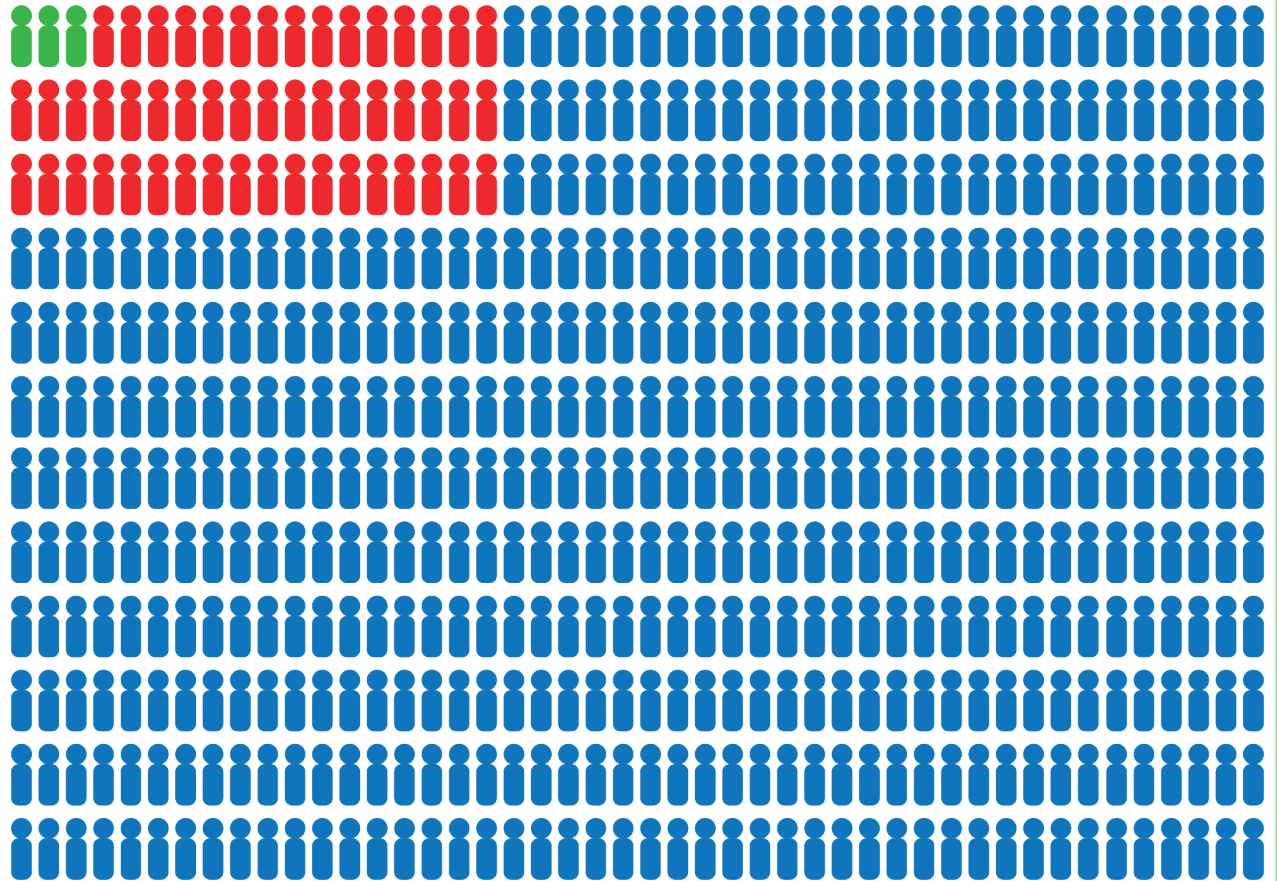
20 board members.

Our connections add up.

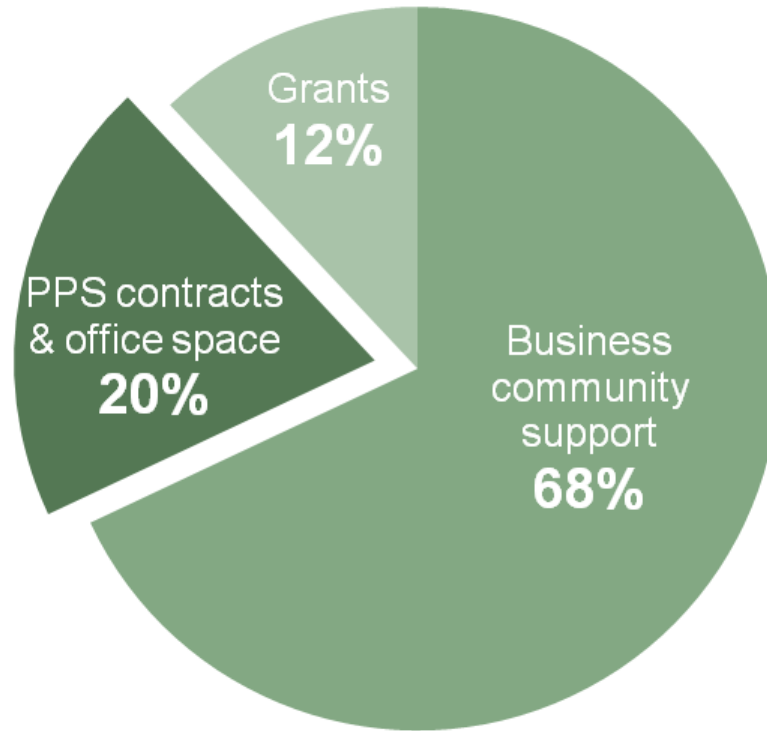
3 staff.

20 board members.

770 volunteers.



PWA budget



Our partners stick with it...



...and more are joining in.

z i b a

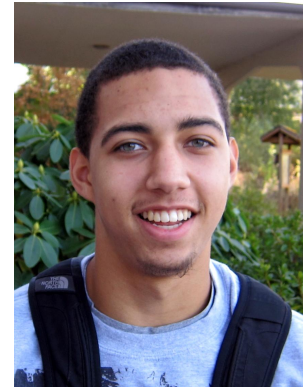
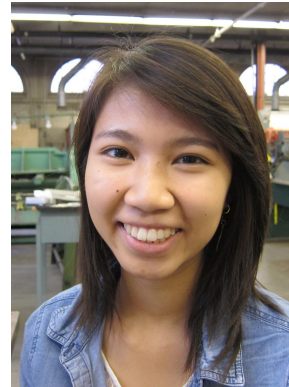
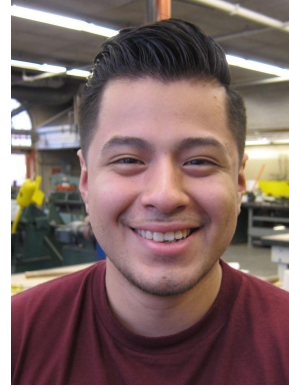
ebay



What motivates PWA and our connections?



Your students





“I realized it wasn’t so daunting,
it wasn’t so scary, the idea of
my future.”

Skylar Williams, Madison High School , Oct. 2015

“Very informative and engaging. .. It showed me how many paths you can take in college.”

Dylan Kelley-Little, Alliance High School
Second Story Design Career Day Feb. 2015

“I didn’t know there were so many options.”

Julia Coleman, Wilson High School
Kaiser Permanente Career Day, Feb. 2015



“When you go off campus and see things, it’s a totally different experience.”

*Anayla Warren-Prem Singh
Jefferson High School , Jan. 2015*

“I learned that it is important to do your best because the person next to you is trying their best.”

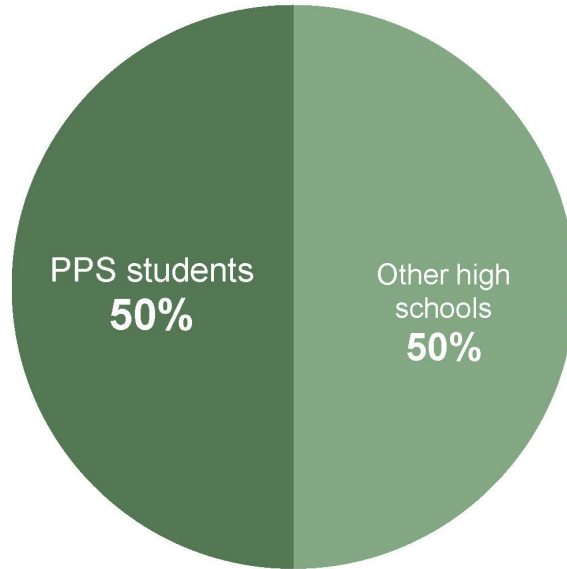
Alexander Criscuolo, MLC, Wieden+Kennedy Career Day, March 2015

“I liked being able to view the real jobs and work behind the scenes.”

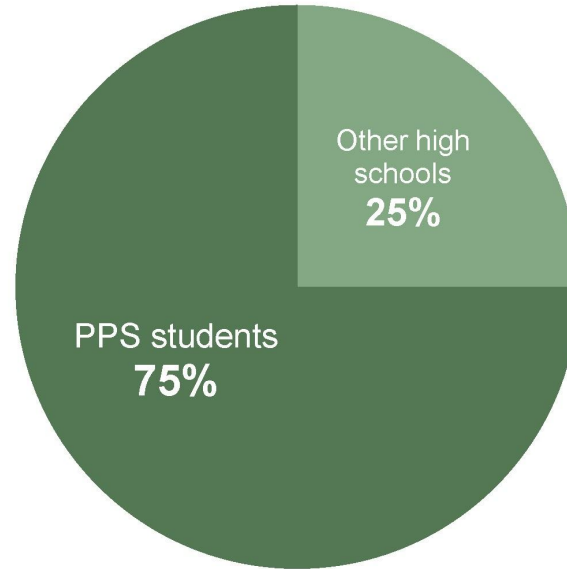
Toriyana G., Roosevelt High School, W+K Career Day, March 2015

PWA is growing.

8,500+ career experiences this year; **4,450+** in PPS



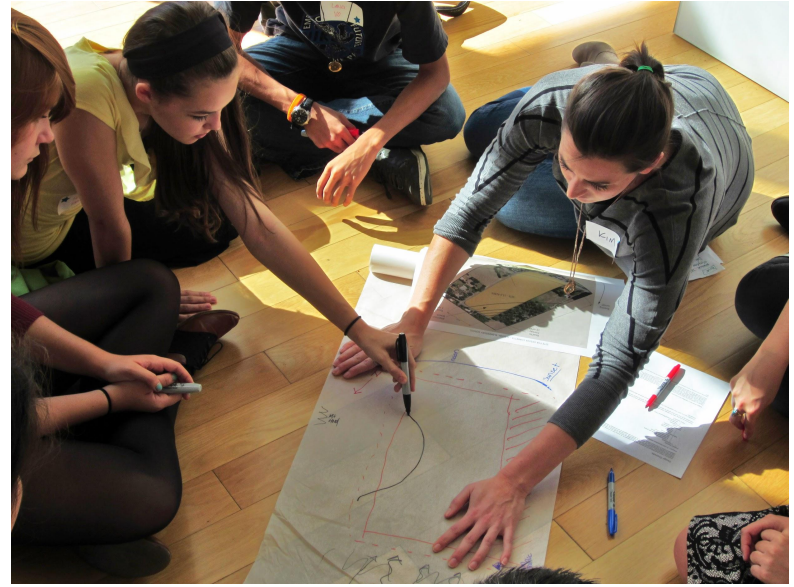
NW Youth Careers Expo



Career days, mentorships and other in-depth experiences

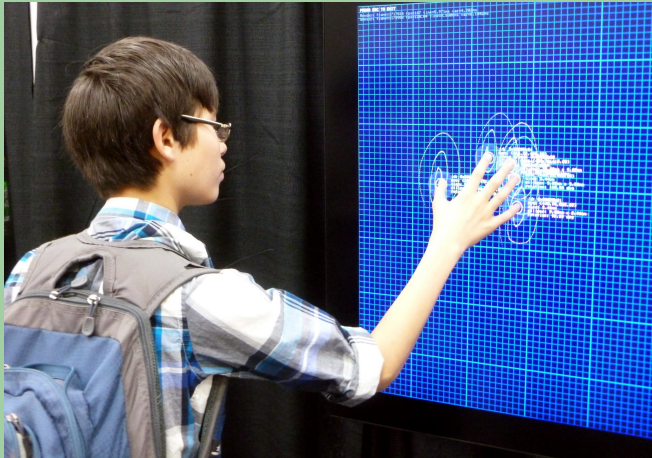
PWA is growing.

Focus: **In-depth** experiences for PPS students





Let's keep it growing.





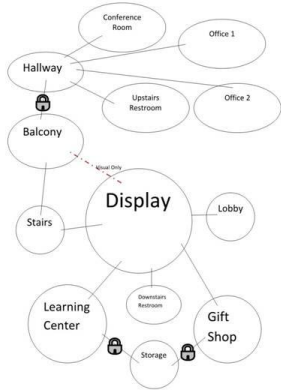
ACE MENTOR PROGRAM

ARCHITECTURE ▪ CONSTRUCTION ▪ ENGINEERING

A chance to build



Bubble Diagram



- Brainstorming Rooms:
- Size
 - Adjacencies
 - Extra Space
 - Public Access (locks)
 - Placement

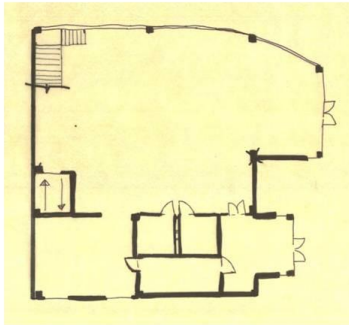
• Massing



Creating massing models helped us visualize how the building might look.

Breaking up into several groups, we each played a key role in designing some of the buildings' crucial features.

Floor Plan



First Floor Plan

- First Floor Includes:
- Lobby
 - Display
 - Gift Shop
 - Stairs/Elevator
 - Learning Center
 - Bathrooms
 - Storage

Interior Design

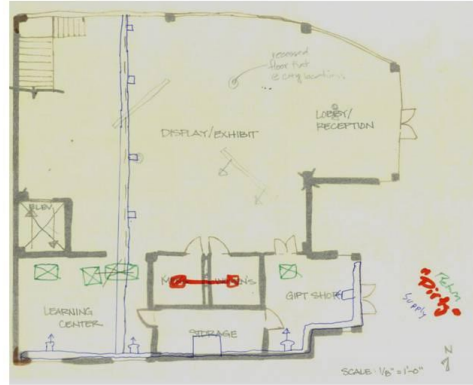


A chance to create



MEP

1st floor



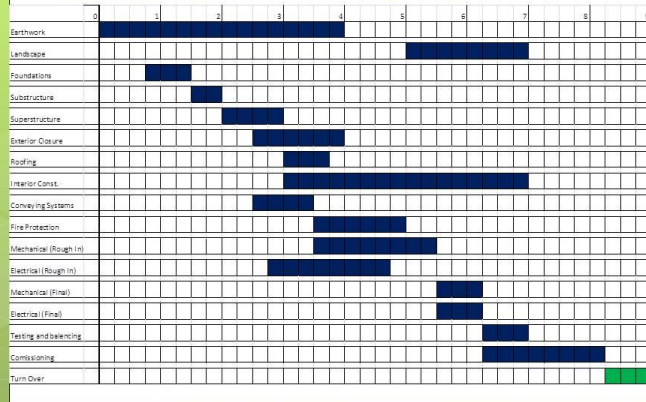
Conceptual Estimate

CONCEPTUAL ESTIMATE

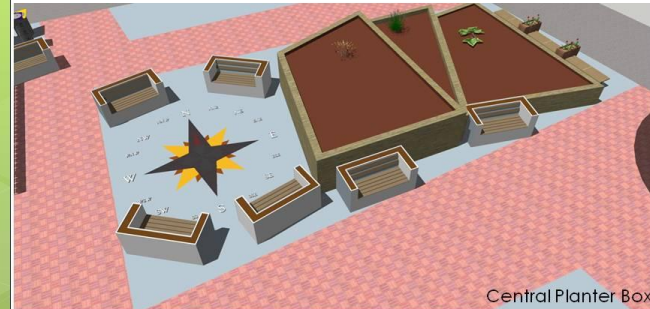
Project: Estimate No.:
 Owner: Date:
 Location: Estimator:
 Architect: Building (SF): 4,830

Description	Quantity	U/M	Unit Price	Total
SITE REQUIREMENTS	4,830	sf	\$23.50	\$113,500
EARTHWORK	4,830	sf	\$19.83	\$95,800
LANDSCAPE	4,830	sf	\$12.39	\$59,864
FOUNDATIONS	4,830	sf	\$5.23	\$25,240
SUBSTRUCTURE	4,830	sf	\$4.76	\$22,990
SUPERSTRUCTURE	4,830	sf	\$2.31	\$11,160
EXTERIOR CLOSURE	4,830	sf	\$31.12	\$150,329
ROOFING	4,830	sf	\$11.06	\$53,440
INTERIOR CONSTRUCTION	4,830	sf	\$29.06	\$140,339
CONVEYING SYSTEMS	4,830	sf	\$9.32	\$45,000
FIRE PROTECTION	4,830	sf	\$2.50	\$12,075
MECHANICAL	4,830	sf	\$22.11	\$106,770
ELECTRICAL	4,830	sf	\$24.27	\$117,205
Subtotal				\$840,212
Design Contingency	10%			\$84,021
Project Overhead and Fee	12%			\$110,908
Total Construction Cost	4,830	sf	\$214.31	\$1,035,141

Construction Schedule

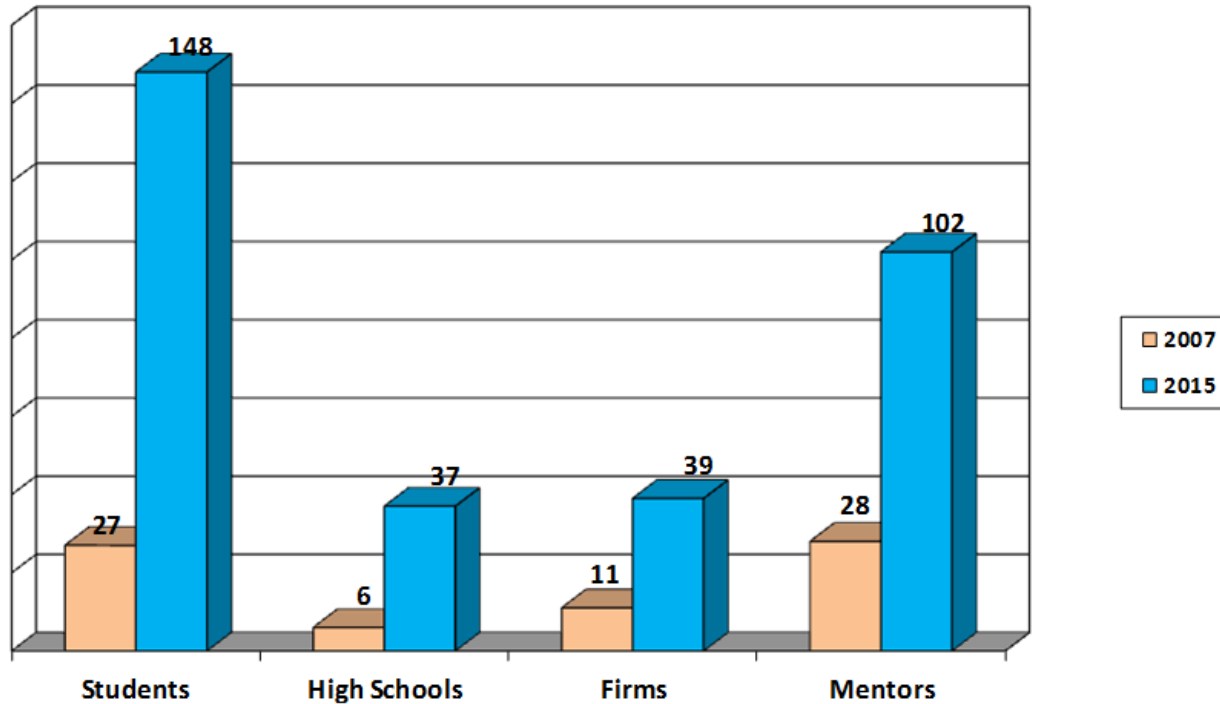


3D Model - Renderings



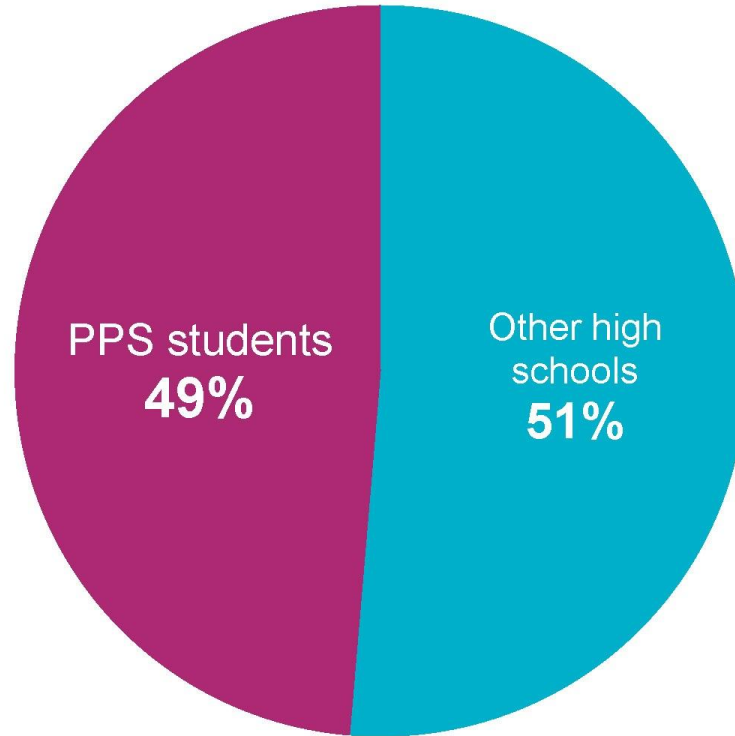
Central Planter Box

A story of growth



PPS as a special partner

**148 students this year;
half from PPS**



Opportunities for students who need them most

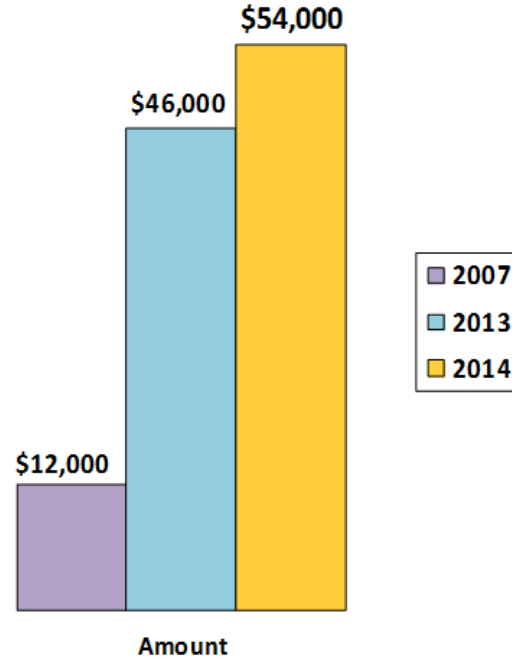


Strong community support

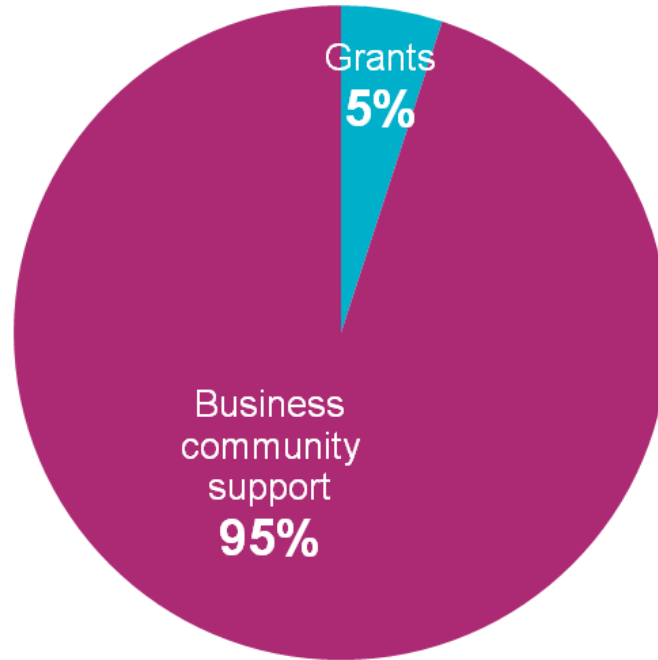
- **Michelle Schulz, Chair**
GBD Architects
- **Nick Collins, Vice Chair**
PAE
- **Jerry Abdie, Secretary**
KPFF Consulting Engineers
- **Chris Clary, Treasurer**
Cochran Electric
- **Adam Solomonson**
Mackenzie
- **Bart Dickson**
Oregon Electric
- **Brian Blount**
Arcis Corp
- **Carol Mayer-Reed**
Mayer/Reed
- **David Peters**
Portland Water Bureau
- **Dorin Nicorici**
Dynalectric Company
- **Ed Dean**
Nishkean Dean
- **Eric Buschert**
GBD Architects
- **Erik Teyema**
McKinstry
- **Iris Boulware**
Howard S. Wright
- **Jason Roberts**
Ankrom Moisan
- **Jeanne Yerkovich**
Portland Public Schools
- **Jim Hook**
Portland State University
- **Jim Link**
Skanska
- **Jim Ray**
JE Dunn
- **Joe Sandahl**
Acorn Funds
- **Jordan Messinger**
PacifiCorp
- **Kate Mackinnon**
ZGF Architects LLP
- **Katrina Day**
Hoffman Construction
- **Kirk Davis**
Glumac
- **Matt Baker**
Lease Crutcher Lewis
- **Rob Hennis**
Viewpoint
- **Sam Stadler**
SRG Partnership
- **Steve Olson**
DOWA - IBI Group

A path to college

ACE Portland
has awarded
\$248,000
in scholarships
between
2006 to 2014



Private funding, public good



It works.



“You’re with mentors from all these different disciplines. They work on this every day and they’re passionate about it and they just want to teach you about it. It’s really great.”

*Grant High School graduate Abby Cridland,
now a senior at the University of Oregon*

It matters.



“I was waiting my whole life just to show my work and my creativity somewhere. I could finally show it there, in ACE.”

Franklin High School student Antonio Crosier

Thank you



Worksystems

Local Workforce Investment Board

serving

City of Portland, Multnomah and Washington Counties

Worksystems, Inc. is an equal opportunity employer/program. Auxiliary aids and services available upon request to individuals with disabilities.
To place a free relay call in Oregon dial 711.
This program financed in whole or in part with funds provided by the U.S. Department of Labor.

Strategic Plan Goal

Ensure that youth and the emergent workforce have the academic and core competencies required by employers.

Primary strategy: Enhance work-based learning opportunities and post-secondary transitions and success for disconnected youth.



Career Exposure

Oregon Connections:

- Web-based tool that connects educators and career counselors with CRLE's for students
- Developed in partnership with our region's STEM Hubs
- Beta testing now - launch in fall 2015



Career Exploration

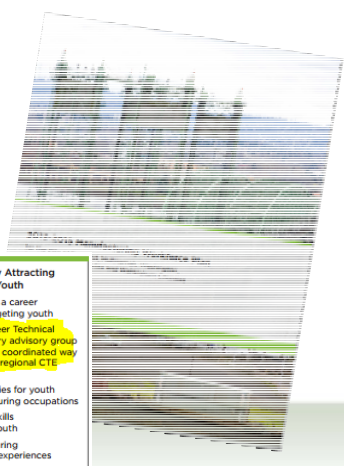


Career Preparation

MFG Day 2014 - 600 students went on manufacturing company tours and career exploration activities.

CTE Equivalency - Advanced a policy framework based on Washington State to provide core academic credit for CTE coursework.

Common Performance Standards
Identified a recommended set of standards for manufacturing programs to prepare CTE graduates for entry-level positions

- 
1. Building a Labor Pipeline by Attracting Interested, Committed Youth
- Outcomes:
- Develop and implement a career exposure campaign targeting youth
 - Convene a regional Career Technical Education (CTE) industry advisory group to give manufacturers a coordinated way to inform and influence regional CTE programs
 - Support 100 opportunities for youth internships in manufacturing occupations
 - Certify manufacturing skills competencies of 200 youth
 - Create 1,000 manufacturing career-related learning experiences



Career Attachment

National Career Readiness Certificate

- Industry recognized skill verification in applied mathematics, reading for information and locating information.

Career Connect Network:

- Preparing youth for successful careers through continued education and work-based learning.
- New Avenues for Youth, Native American Youth and Family Services, Portland YouthBuilders, Portland OIC Rose Mary Anderson HS and Open Meadow Alternative School

